

Main

Basic Info

- 6 params, 0 ports
- top module ✓

params

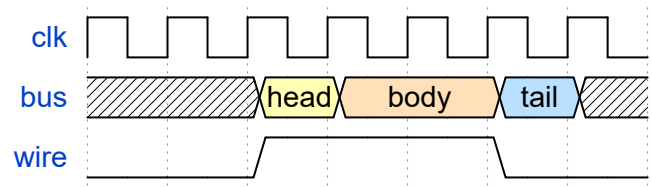
no params info

ports

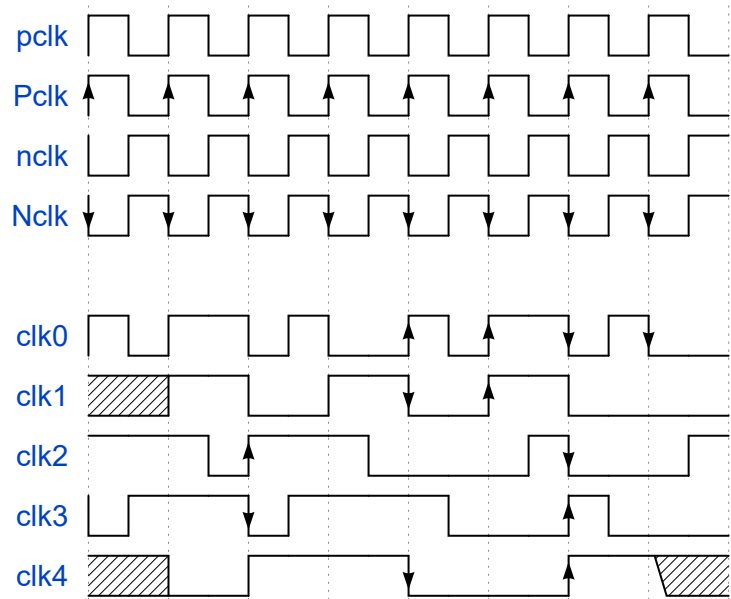
| name | type | width | description |
|-------|--------|-------|----------------|
| a | input | 1 | // Main output |
| b | input | 1 | // Main output |
| c | input | 1 | // Main output |
| Qus | output | 1 | |
| Qs | output | 1 | |
| `main | output | 1 | |

Dependency

| name | module | path |
|----------------|--------------|-----------|
| u_dependence_1 | dependence_1 | child_1.v |
| u_dependence_2 | dependence_2 | child_2.v |
| u_dependence_3 | dependence_3 | |



this is wavedrom demo1



this is wavedrom demo2